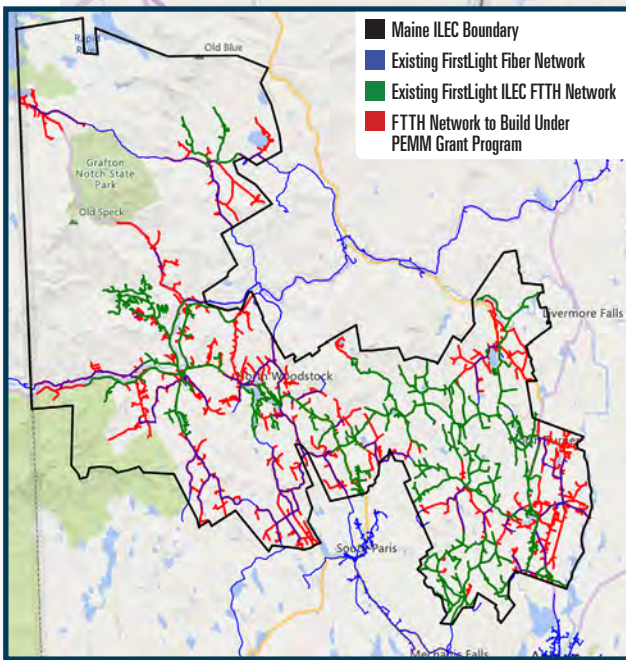
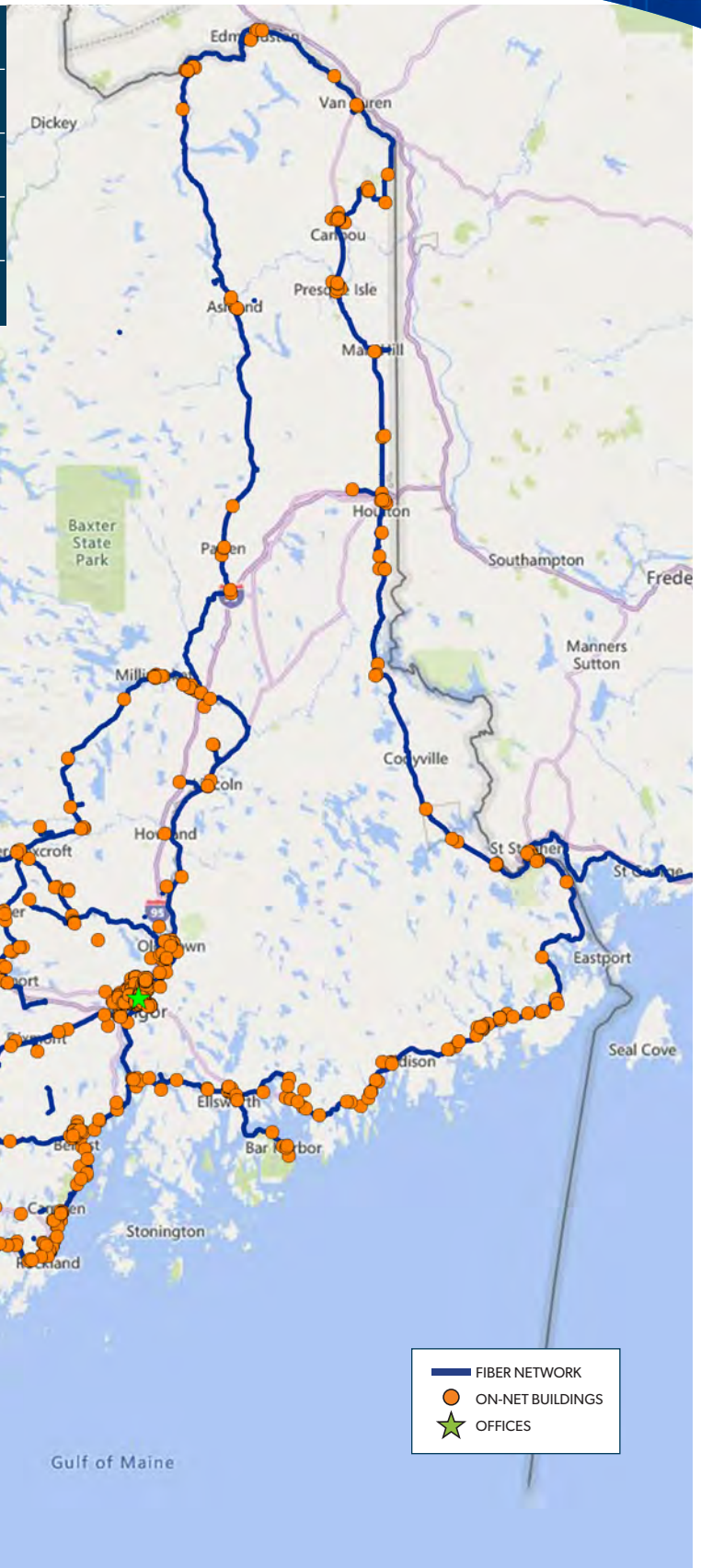


Maine Network

Fiber Route Miles	3,600
# of On-Net Buildings	3,500
# of Near-Net Buildings	24,000
# of FirstLight Offices	4
% of FirstLight Employees	18%



Overview

FirstLight has been building and operating its own fiber network, including fiber to the premises systems, for over 20 years with roots going back a century. The network has approximately 25,000 route miles, nearly 15,000 on-net locations with access to more than 125,000 locations in six states, with connectivity to Montreal. In our key markets, we have significant fiber density to ensure that we can offer a comprehensive solution that addresses all locations. FirstLight's core data and switching platforms are designed for maximum availability to ensure that our services meet or exceed our stated Service Level Agreements (SLAs).

Support

FirstLight combines advanced, proven technology with a staff experienced in the design, construction, deployment and operation of high quality communications networks. FirstLight's senior management team has over a century of direct and related experience. FirstLight's project managers, engineers, technicians, and support personnel continuously monitor, maintain and augment the network to provide the high quality service and support our customers expect. FirstLight's geographically diverse Network Operations Centers (NOCs) are strategically located with locally-based support personnel situated throughout our footprint for prompt response. FirstLight team members pride themselves on superior service with the understanding that our clients' mission-critical communications demand comprehensive, proactive support.

Experience Operating Fiber Networks & Managing BTOP Assets

FirstLight has significant experience building and operating fiber networks throughout the Northeast. In fact, we own and operate a fiber network of approximately 25,000 route miles spanning 6 states, and on average we build 2,000 route miles each year.

BTOP and Broadband Funding

While FirstLight did not directly participate in the BTOP or Federal Funding programs to gain access to grant funds, various of its acquisitions were recipients of BTOP grants including ION, Sovernet Communications, 186 Communications (186), Maine Fiber Company (MFC) and KINBER. Through its acquisitions, FirstLight has gained expertise in successfully managing BTOP assets and fully appreciates and complies with the obligations of these grant awards.

Emergency Connectivity Fund (ECF)

FirstLight has extensive experience in leveraging FCC ECF support to connect students, schools and libraries in the FirstLight region. For eligible schools and libraries, the ECF Program covers reasonable costs of laptop and tablet computers; Wi-Fi hotspots; modems; routers; and broadband connectivity purchases for off-campus use by students, school staff, and library patrons.